

[Course] : **Applied Thermal and Fluid Engineering**

[Field] : **Naval Architecture
& Ocean Engineering**

Stuff

Prof.	Hajime KIHARA
Assoc. Prof.	Kazuki YABUSHITA
Lecturer	Shigeyuki HIBI
Lecturer	Go OKAHATA

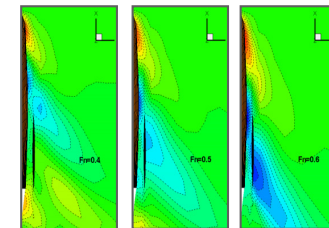
<http://www.nda.ac.jp/~kqnaoe/kaiyo.html>

http://www.nda.ac.jp/cc/mechsys/index_e.htm

Introduction of research activities

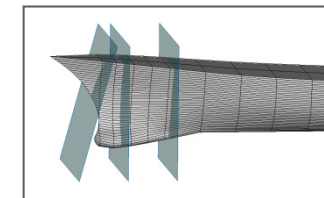
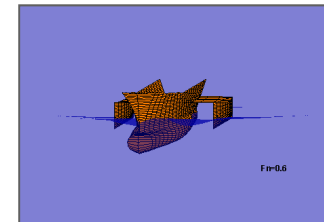
■ Structural response analysis of very large floating structure (VLFS)

- Development of a simple design method
- Application to the design for a floating airport or the Night Landing Practice (NLP)



■ Analysis of ship motions in waves for large high-speed ships

- Seakeeping performance for multi-hull ships
- Strength analysis for cross-deck floor parts



■ Wave loads analysis on slamming

- Numerical analysis for water impact problems
- Computational models of spray ejection

